



L/B NORTHSTAR VOYAGER

145' CLASS LIFTBOAT

OFFICIAL# - 965698 -CALL SIGN- WDM2304

DIMENSIONS:

Length {Overall} 91'

Beam (Overall) 65'

Beam (Barge Only) 52'

Depth (Barge Only) 8'

Design Draft 6'

HULL CHARACTERISTICS:

Gross Tonnage {US Reg.} Under 200

Open Deck 1,850 sq. ft.

Total Usable Space 2,600 sq. ft.

Maximum Deck Load 175,000 lbs.

LEGS:

Number 3

Length 145'

Size 42" Dia. X 0.718 wall

Material API SLX-70 KSI Steel

PADS:

Length 24'

Width 12'

Depth 2'

REGULATORY CLASS:

USCG O.S.V.

CRANES:

Detroit GM-471

Primary Crane 50 Ton @ 25' Radius

Boom "Telescopic" 50'-100'

Auxiliary Crane 15 tons

Boom "Telescopic" 40'-70'

PROPULSION:

Main Engines GM-12V-71N

Horsepower/Engine 365@ 1800 rpm

Reduction Gear Twin Disc MG-514 4.5:1

Estimated Speed 6 knots



GENERATORS:

GM (2) 6-71/75 KW

CAPACITIES:

Fuel 7,114 gls.

Potable Water 9,800 gls.

Lube Oil 150 gls.

Hydraulic Oil 1,300 gls.

Submersible Pumps 2 @ 150 gpm each

NAVIGATION EQUIPMENT:

Radar, VHF, Fathometer, Compass, Single Side Band, AIS, GPS, Anemometer, Electronic Coastal Plotter, Satellite Communications w/ Email.

JACKING:

Max. Working Water Depth 100'

Jacking Speed 8' minute

SPECIAL FEATURES:

Separate VIP Room

Zero Discharge Capability

Marine Sewage Treatment System

ACCOMMODATIONS:

Berths: Total 29 (6 crew /23 PACS)

FUEL CONSUMPTION:

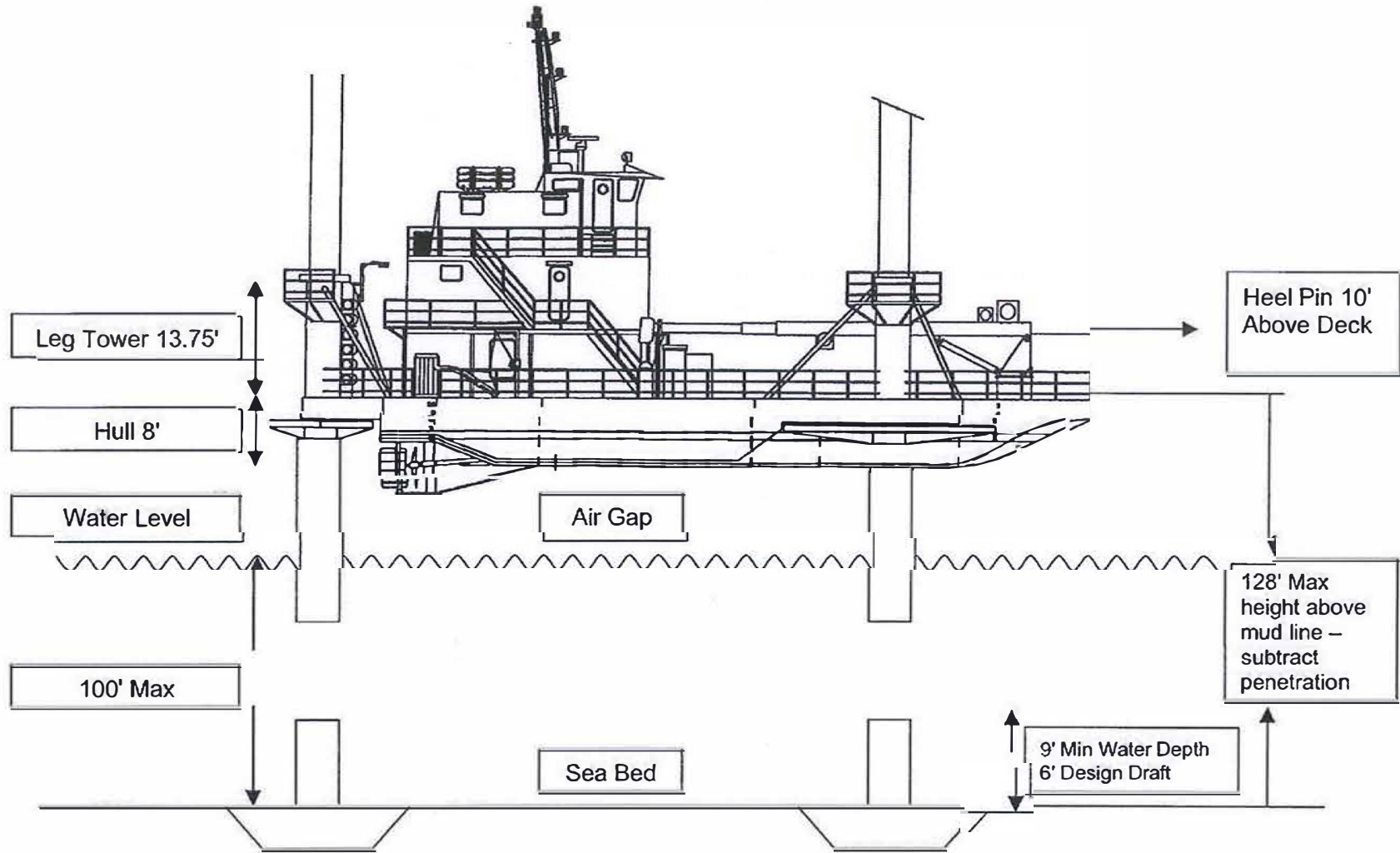
Mains 50 gal/hr = 1,200 gal/day

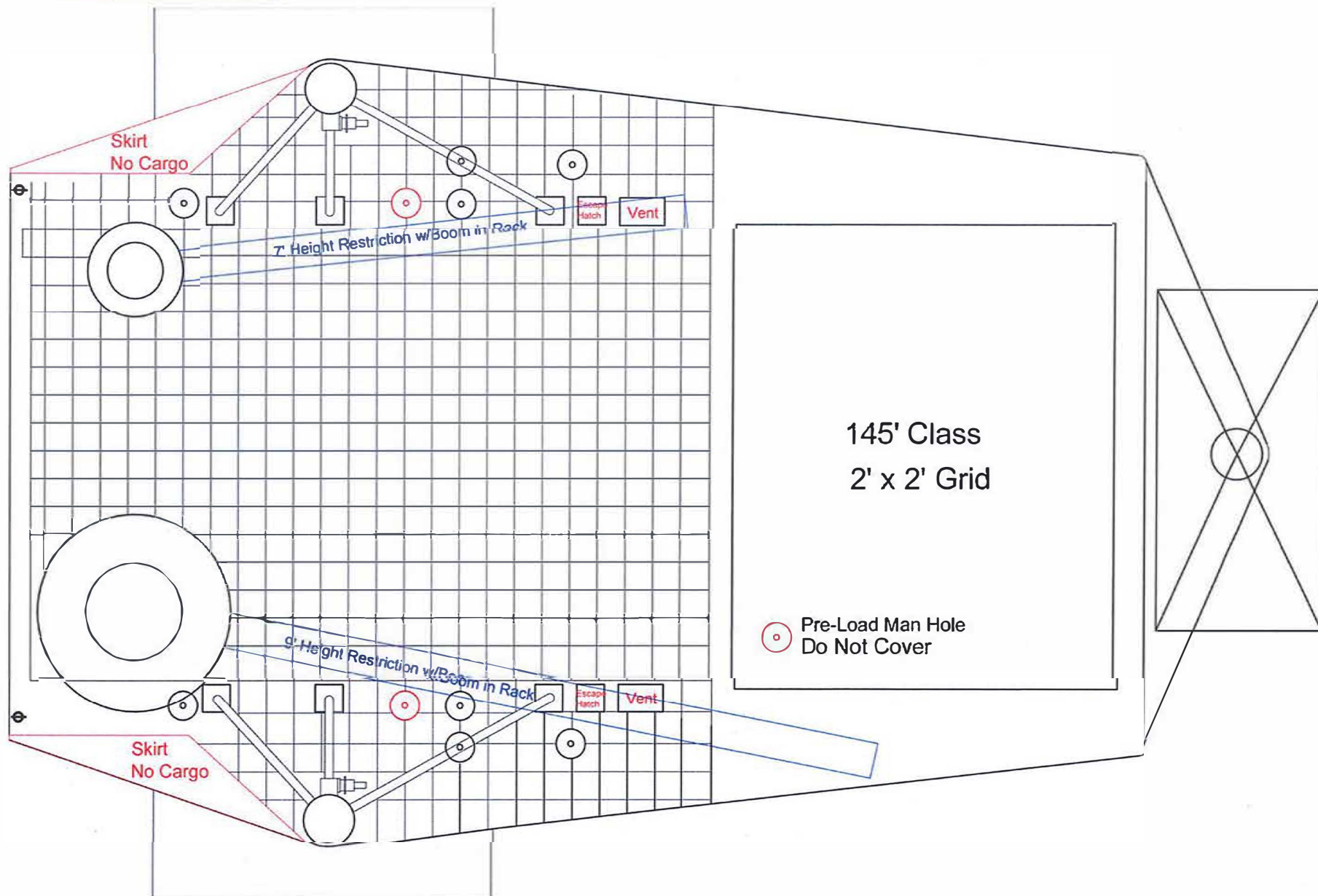
Generators 8 gal/hr = 192 gal/day

Main Crane 8 gal/hr = 192 gal/day

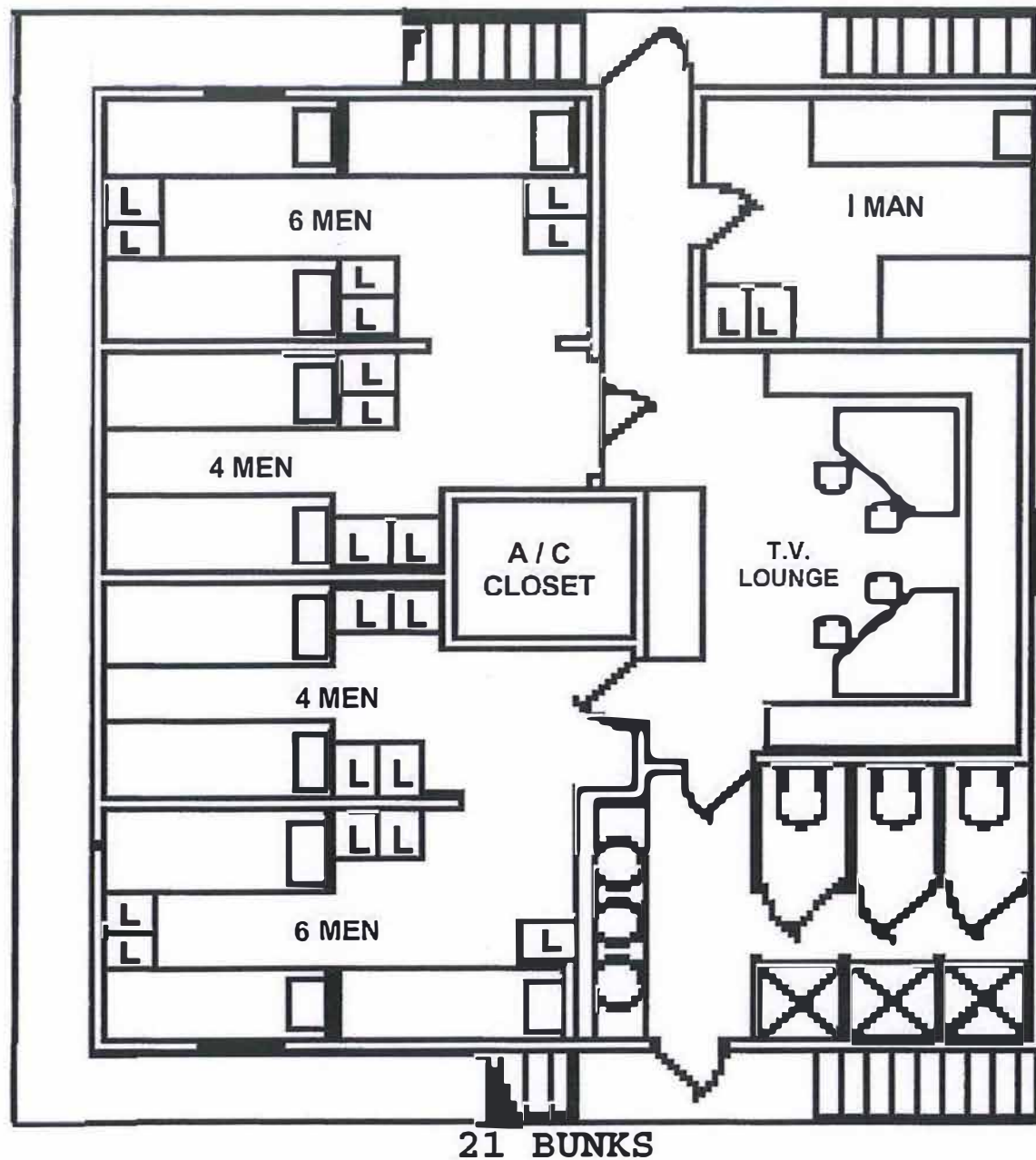
Aux. Crane 8 gal/hr = 192 gal/day

145 Class

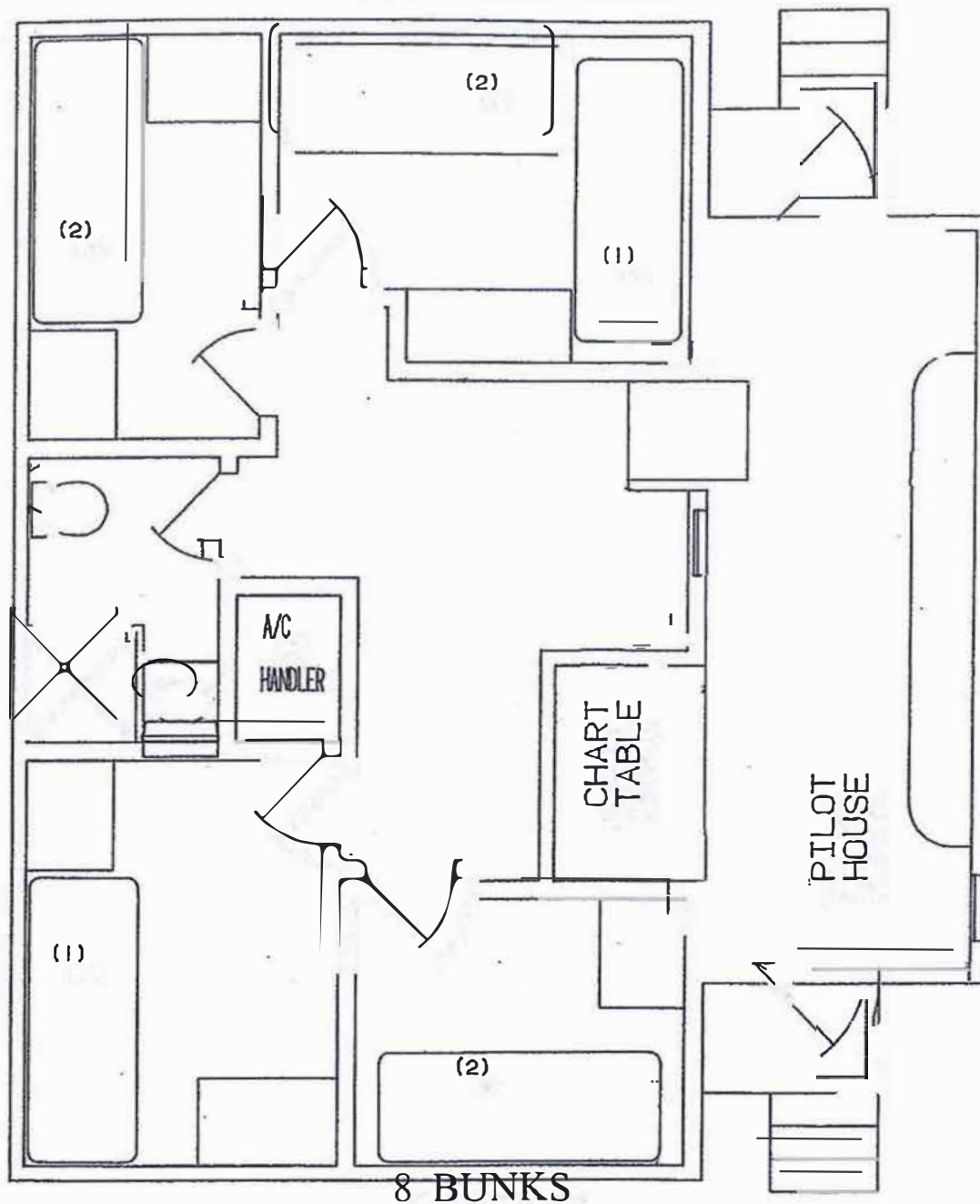




01 LEVEL



02 LEVEL





LOAD CHART (STATIC)

MAIN HOIST = 830' OF 6 x 25 IWRC-EIPS

AUX HOIST = 350' OF 19 x 7 IWRC-EIPS

EBC CRANES

TC 100

54' - 100' BOOM

MAIN HOIST - FIVE PART LINE

AUX. HOIST - 1 PART LINE

RADIUS OF LOAD (FT)	FULLY RETRACTED		FULLY EXTENDED		FULLY EXTENDED	
	CAPACITY (POUNDS)	BOOM ANGLE (DEGREES)	CAPACITY (POUNDS)	BOOM ANGLE (DEGREES)	CAPACITY (POUNDS)	BOOM ANGLE (DEGREES)
10	100,000	79	-	-	-	-
15	75,000	74	60,000	82	5000	82
20	57,000	68	51,000	79	5000	79
25	47,000	62	40,000	76	5000	76
30	40,100	56	33,000	73	5000	73
35	35,000	49	28,000	70	5000	70
40	31,000	42	23,000	66	5000	66
45	28,000	33	20,000	63	5000	63
50	25,000	22	18,000	60	5000	60
55	19,000	0	16,000	57	5000	57
60	-	-	15,000	53	5000	53
65	-	-	13,000	49	5000	49
70	-	-	12,000	45	5000	45
75	-	-	11,000	41	5000	41
80	-	-	10,000	37	5000	37
85	-	-	9,000	32	5000	32
90	-	-	8,000	26	5000	26
95	-	-	7,000	18	5000	18
100	-	-	4,500	0	4500	0

STATIC LOAD = DYNAMIC LOAD X 1.5 (NOTE: WINCH CAPACITY WILL BE LIMITING) PERSONNEL HANDLING LOAD = DYNAMIC LOAD DIVIDED BY 2



LOAD CHART (STATIC)

MAIN HOIST = 420' OF 3/4 19 x 7 IWRC-EIPS

AUX HOIST = 300' OF 9/16 19 x 7 IWRC-EIPS

EBI CRANES
TC 30
34' - 60' BOOM

MAIN HOIST - THREE PART LINE					AUX. HOIST - 1 PART LINE	
FULLY RETRACTED			FULLY EXTENDED		FULLY EXTENDED	
RADIUS OF LOAD (FT)	CAPACITY (POUNDS)	BOOM ANGLE (DEGREES)	CAPACITY (POUNDS)	BOOM ANGLE (DEGREES)	CAPACITY (POUNDS)	BOOM ANGLE (DEGREES)
10	30,000	72	28,000	80	5,000	80
15	22,000	63	19,000	75	5,000	75
20	16,500	52	14,500	70	5,000	70
25	13,000	40	12,000	65	5,000	65
30	10,000	24	10,000	60	5,000	60
35	6,000	3	8,500	54	5,000	54
40	-	-	7,000	48	5,000	48
45	-	-	6,000	41	5,000	41
50	-	-	5,000	33	5,000	33
55	-	-	4,300	23	4,300	23
60	-	-	2,500	3	2,500	3

STATIC LOAD = DYNAMIC LOAD X 1.5 (NOTE: WINCH CAPACITY WILL BE LIMITING) PERSONNEL HANDLING LOAD = DYNAMIC LOAD DIVIDED BY 2